



Est. 1991  
**DESIGNSUPPLY**  
supporting creativity

HP DesignJet Z6 and Z9+ Printer Series

**EXPECT NOTHING LESS  
THAN PERFECTION**



More quality with fewer inks. Deliver professional photo and high-definition prints and save time with the first integrated vertical trimmer.<sup>1</sup> Protect your work and information with industry-leading security. Get incredible results without compromising. You can have it all.

Two new printer series, one single purpose:

# PERFECTION

Amazing quality, faster, simpler, and with industry-leading security.

## HP DesignJet Z9+ PostScript® Printer Series



Designed to deliver professional photo quality with fewer inks at high speeds, the HP DesignJet Z9+ PostScript® Printer Series prints 2.5 times faster<sup>4</sup> without sacrificing quality. Its integrated vertical trimmer cuts post-processing time by up to 20%.<sup>2</sup> And we help streamline your workflow with software solutions like HP Applications Center.<sup>3</sup>

## HP DesignJet Z6 PostScript® Printer Series

Perfect for printing maps and other technical drawings where high-definition detail, high-contrast color, and smooth gradients are paramount, the HP DesignJet Z6 PostScript® Printer Series also makes easy work of complex files with powerful processing architecture. Built-in security helps protect your device, data, and documents. And the integrated vertical trimmer<sup>1</sup> cuts maps to different sizes in fewer steps.





## Technology innovations

Innovative HP technologies work in tandem to provide professional photo quality—without speed tradeoffs and with fewer inks.

Original HP Vivid Photo Inks are optimized to deliver amazing, professional quality prints on photo and specialty papers, and are designed to maximize the life of high-definition HP printheads. Chromatic red, blue, and green inks (RGB) enable an expanded color gamut with true neutral gray.<sup>5</sup> HP Vivid Photo Inks provide water- and fade-resistant prints.<sup>6</sup>

New HP 746 Printheads with true 2400 nozzle-per-inch high-definition nozzle architecture (HDNA), provide twice the nozzle density of previous HP DesignJet Z-series printheads. Using dual drop technology, high-definition HP printheads produce a combination of large drop sizes for robust area fills at fast speeds, while small drop sizes reduce visible grain—eliminating the need for light colored inks.

Managing all of this with a completely new approach, HP DesignJet Z9+ and Z6 series printers use HP Pixel Control to produce sharp details and smooth gradients, even for challenging color combinations.

## Security at the forefront

Protect your work and your information with industry-leading security. HP is working in the background to protect your device, data, and documents. Limit unauthorized access to your device and your data with HP Secure Boot, whitelisting, and a self-encrypted hard disk. Authentication solutions like PIN printing and integrated pull printing<sup>8</sup> help preserve confidentiality. While HP JetAdvantage Security Manager simplifies security management across your printing environment.

**7.9**  
billions

records exposed.  
2017 saw more than 5,200  
breaches that exposed  
nearly 7.9 billion records<sup>9</sup>

**64%**

of IT managers state  
their printers are likely  
infected with malware<sup>10</sup>

**43%**

of companies ignore  
printers in their  
endpoint security  
practices<sup>16</sup>

## Complete your printing experience

Experience printing like never before—let HP simplify your printing experience with a broad range of software solutions tailored for your printing, operations, and business needs.

Simply create and print professional looking large-format prints with a suite of easy design tools from the HP Applications Center.<sup>3</sup> Confidently integrate with your existing workflows thanks to HP's extensive RIP certification program.<sup>11</sup> Manage your print business with greater control and agility thanks to HP PrintOS, or simplify printer management with one-click printing from HP Click printing software<sup>12</sup> and HP Partner Link Pay-per-use for seamless supplies and services management.

# HP DesignJet Z9<sup>+</sup>

## PostScript® Printer Series

### AMAZING—Deliver high quality with confidence

Produce professional photo-quality prints with smooth transitions using HP Pixel Control—no need for light inks with new high-definition HP printheads and dual drop technology. Achieve expanded gamut with RGB HP Vivid Photo Inks. Upgrade to get superior gloss uniformity.<sup>7</sup>

### FAST—Work without delays

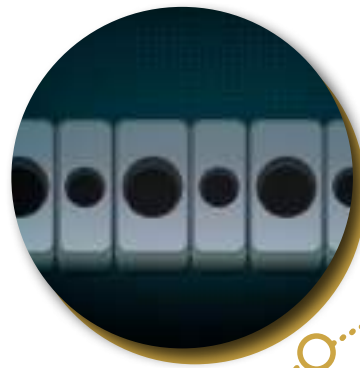
Print 2.5 times faster,<sup>4</sup> without losing quality with 2400 nozzle-per-inch high-definition printheads. Cut post-processing labor time up to 20% with the first printer to include an integrated vertical trimmer.<sup>1</sup> Save time with dual roll support.<sup>1</sup>

### SIMPLE—New tools for you and your customers

Simplify your workflow. Easily design applications from posters to banners and canvas with the HP Applications Center.<sup>3</sup> Use your current RIPs.<sup>11</sup> Get remote visibility and control to better manage your print production environment with HP PrintOS.

**For more information, please visit**  
**[hp.com/go/DesignJetZ9](http://hp.com/go/DesignJetZ9)**

High-definition HP printheads with dual drop technology  
No need for light inks



9 HP Vivid Photo Inks  
Upgrade to include HP Gloss Enhancer,<sup>7</sup>  
you get gloss uniformity





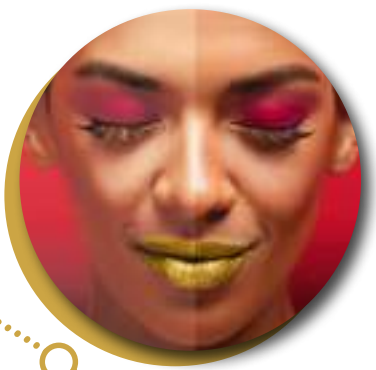
**Vertical trimmer**  
Cut post-processing labor time up to 20%<sup>4</sup>



**Built-in security**  
Help protect your device, data, and documents



**HP Pixel Control**  
For smooth transitions and sharp details



**Embedded i1 spectrophotometer<sup>13</sup>**  
Achieve color consistency and accuracy



**Dual rolls and automatic switching<sup>2</sup>**  
Spend less time changing media



**HP Applications Center<sup>3</sup>**  
Simplify design with tools and templates

# HP DesignJet Z6

## PostScript® Printer Series

### PRECISE—Clearly distinguish subtle details

Produce prints with clear details and high-contrast color with high-definition HP printheads—no need for light inks with dual drop technology. Get smooth gradients with HP Pixel Control. HP Vivid Photo Inks provide water-/fade-resistant prints.<sup>6</sup>

### FAST—Work without delays

Handle complex files with powerful processing architecture and the Adobe PDF Print Engine.<sup>14</sup> Print up to 20% faster<sup>15</sup> with 2400 nozzle-per-inch HP printheads. Cut maps to different sizes in fewer steps with an integrated vertical trimmer.<sup>1</sup>

### SECURE—Protect your work and your information

Built-in security features—like HP Secure Boot, whitelisting, authentication solutions, and HP JetAdvantage Security manager—help safeguard your printers and your data, and preserve confidentiality.

**For more information, please visit**  
**[hp.com/go/DesignJetZ6](http://hp.com/go/DesignJetZ6)**

High-definition HP printheads with dual drop technology  
Print sharp detail, high-contrast color



Vertical trimmer<sup>1</sup>  
Cut prints to different sizes in fewer steps



### HP Pixel Control

For smooth transitions and sharp details



### 6 HP Vivid Photo Inks

Water- and fade-resistant prints, indoors and out<sup>6</sup>



### Adobe PDF Print Engine<sup>14</sup>

Quadcore processor and Adobe PDF print Engine<sup>11</sup> to handle even the most complex files



**Dual roll support and automatic roll switching<sup>1</sup>**  
Spend less time on media changes



**Security features**  
Help protect your device, data, and documents



**HP Applications Center<sup>3</sup>**  
Simplify design with tools and templates





## Footnotes

- <sup>1</sup> Vertical trimmer and dual rolls included with the HP DesignJet Z6dr 44-in PostScript® Printer with V-Trimmer only.
- <sup>2</sup> Vertical trimmer and dual rolls included with the HP DesignJet Z9®dr 44-in PostScript® Printer with V-Trimmer only. Up to 20% reduction in post-processing labor time based on internal HP testing compared to HP DesignJet Z9®dr series printers without built-in vertical trimmer.
- <sup>3</sup> Applications Center: Requires an HP Applications Center account, Internet connection, and connected Internet-capable device. For more information, see [hpapplicationscenter.com](http://hpapplicationscenter.com).
- <sup>4</sup> Based on internal HP testing. Up to 2.5 times faster printing compared to the HP DesignJet Z3200 Photo Printer series. May vary depending on print mode and media type.
- <sup>5</sup> Chromatic blue, chromatic green, gray, and optional gloss enhancer available with the HP DesignJet Z9® PostScript® Printer series only. Optional gloss enhancer upgrade available second half 2018.
- <sup>6</sup> Performance may vary based on writing system differences. Print permanence estimates by HP Image Permanence Lab based on the same formulation of HP Vivid Photo Inks used with the HP DesignJet Z6200 Photo Production Printer, using 6 inks. Water resistance performance varies based on printer and print profile. Water resistance testing by HP Image Permanence Lab on a range of HP media and follows ISO 18935 method. Display permanence rating for interior displays/away from direct sunlight by HP Image Permanence Lab on a range of HP media. For more information, see [HPLFMedia.com/printpermanence](http://HPLFMedia.com/printpermanence).
- <sup>7</sup> Based on internal HP testing, comparing to HP DesignJet Z9® series printers without gloss enhancer. HP Gloss Enhancer can be used on photo paper, with the exception of matte-finish papers. Optional upgrade available second half 2018.
- <sup>8</sup> HP DesignJet Z9® and Z6 PostScript® Printer series products are fully compatible with Celveto PIN and pull printing solutions.
- <sup>9</sup> Report by Risk Based Security / Cyber Risk Analytics, January 2018.
- <sup>10</sup> Ponemon Institute, "Insecurity of Network-Connected Printers," October 2015; Help Net Security, "Why enterprise security priorities don't address the most serious threats," July 2015; 26.2% of survey respondents experienced a significant IT security breach that required remediation, and more than 26.1% of these incidents involved print. IDC, "IT and Print Security Survey 2015" IDC #US40612015, September, 2015.
- <sup>11</sup> For a list of HP certified RIPs, visit: [www8.hp.com/us/en/large-format-printers/designjet-printers/zseries-rips.html](http://www8.hp.com/us/en/large-format-printers/designjet-printers/zseries-rips.html).
- <sup>12</sup> Once image is selected, one-click printing when printing the entire file without any modifications to the print settings. Applicable to PDF, JPEG, TIFF, and HP-GL/2 files.
- <sup>13</sup> Embedded in the HP DesignJet Z9® Printer series is an i1 spectrophotometer from X-Rite. Close collaboration between HP and X-Rite ensures a reliable solution that's been thoroughly tested to meet customer demands for ease, quality, and dependability.
- <sup>14</sup> The Adobe PDF Print Engine (APPE) is Adobe's high speed, high fidelity print platform. Version 4 extends APPE's leading edge for print reproduction with new performance efficiencies and breakthrough rendering features. APPE 4 enables printers to increase workflow efficiency and capitalize on the profit potential of innovations in inkjet print technology. To learn more, visit [adobe.com/products/pdfprintengine](http://adobe.com/products/pdfprintengine).
- <sup>15</sup> Based on internal HP testing. Up to 20% faster printing compared to the HP DesignJet Z2600 PostScript® Printer and HP DesignJet Z5600 PostScript® Printer. May vary depending on print mode and media type.
- <sup>16</sup> Spiceworks survey of 309 IT decision-makers in North America, EMEA, and APAC, on behalf of HP, November 2016.



© Copyright 2018 HP Development Company, L.P. The information contained herein is subject to change without notice. The only warranties for HP products and services are set forth in the express warranty statements accompanying such products and services. Nothing herein should be construed as constituting an additional warranty. HP shall not be liable for technical or editorial errors or omissions contained herein.