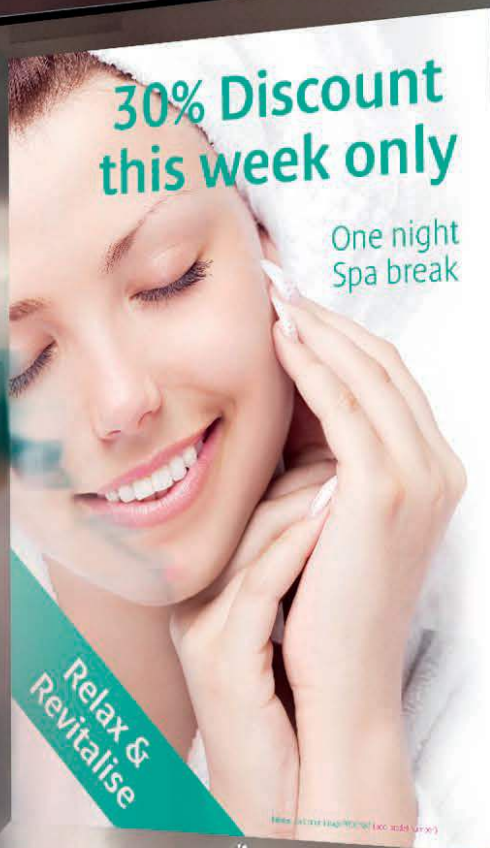


A new benchmark
in large format
colour productivity

Océ ColorWave 900

you can



Canon

Experience new heights of **productivity**

Production bottlenecks are a thing of the past with the Océ ColorWave 900. Capable of an incredible 1,000 square metres per hour, this large format printer redefines your production possibilities for a diversity of applications from posters to maps and technical documents. And unlike traditional large format inkjet systems, the Océ ColorWave 900 maintains maximum productivity regardless of image content, ink coverage or media type.

High speed, high volume colour

The Océ ColorWave 900 delivers unprecedented print speeds at a time when customers are demanding ever-quicker turnaround times. The system can print 18 linear metres per minute, regardless of image complexity, ink coverage or media type. This is achieved by positioning five print heads to cover the full 106 cm (42 inch) width in one pass, firing over 3 billion drops of ink every second. This results in a raw speed of 1,000 square metres per hour and an unparalleled production potential of around 430 A0 prints per hour.

Flexible media handling

Media handling is a critical element when managing high print speeds. Using proven Océ technologies, the Océ ColorWave 900 can operate at the maximum speed the printing technology supports. The system employs a 6-roll media input module and, with rolls up to 200 metres in length, 1,200 metres of input capacity is available. The input module handles widths ranging from 297 mm to 1,067 mm (42 inch). Media is addressed by media type and the system automatically switches from one roll to another when one is empty or another media type or size is required.

Maximise uptime








The Océ Dual Tray High Capacity Stacker allows the operator to fully capitalize on the print speed. By using two large delivery trays, unloading and printing can take place simultaneously to enable maximum uptime. Prints come out dry and are immediately ready for finishing and delivery.



The system can print 18 linear metres per minute, regardless of image complexity, ink coverage or media type.

THIS WEEK'S GYM TIMETABLE

Printed on Canon imagePROGRAF (ed)

| TIME | MONDAY | TUESDAY | WEDNESDAY | THURSDAY | FRIDAY | SATURDAY |
|-------|---|---|---|---|---|---|
| 14:00 |   |   |   |   |   |   |
| 15:00 |   |   |   |   |   |   |
| 16:00 |   |   |   |   |   |   |
| 17:00 |   |   |   |   |   |   |
| 18:00 |   |   |   |   |   |   |
| 19:00 |   |   |   |   |   |   |
| 20:00 |   |   |   |   |   |   |
| 21:00 |   |   |   |   |   |   |

 Circuits  Boxercise  Spinning  Open sess

Jump start your Summer b

✓ In just 30 minutes, the Océ ColorWave 900 can produce over 250 B1 (707 x 1000 mm) sheets, individually personalised.



True application **flexibility**

The perfect combination of speed, quality and media diversity means the Océ ColorWave 900 is ideally suited to applications ranging from point of sale and event posters to maps and technical documents.



APPLICATIONS

- Point of sale
- Event posters
- Maps
- Technical documents

High quality

The system typically prints at 800 x 1600 dpi (or at a maximum resolution of 1600 x 1600 dpi), with a drop size of just 1.2 picolitres. This results in high image quality combined with the ability to produce fine lines and sharp text. Adding to the application flexibility, print lengths of up to 30 metres are supported.

Complement your offset workflow

From short runs to variable imaging or non-standard size printing, the Océ ColorWave 900 is a great complement to your offset workflow. There is minimal setup time and the unit price remains constant whether you are producing a one-off or a run of one thousand prints. And unlike offset, each print can also contain variable content. In just 30 minutes, the Océ ColorWave 900 can produce over 250 B1 (707 x 1000 cm) sheets, individually personalised.

Print technical documents in colour

Studies have shown that printing technical drawings in colour can help to reduce costly building errors¹. Today a large percentage of technical documents are still produced in black and white, primarily due to the speed limitations of colour production. With the Océ ColorWave 900 however, colour speeds rival² those of the fastest black and white systems, so technical documents can be printed in all their glory even when deadlines are looming.

¹ Awareness of failure cost reduction by colour printing, USP Marketing Consultancy 2009

² The Océ ColorWave 900 has a raw speed of 18 lm/ min. The Océ PlotWave 900 has an engine speed of 13 lm/min. Other conventional LED black and white print technologies can reach 15 lm/min.

colour speeds rival those of the
fastest black and white systems



A **delight** for operators

Whether it is submitting a print job, managing the print queue or loading media and inks, the system requires minimal user involvement to produce high quality prints productively.

Effortless workflow

Optimally manage your print jobs using free job submission software, Océ Publisher Select. Print jobs can intuitively be prepared and submitted in batch, with full control and visual feedback of what to expect when printing. For print job submission through the web, use the light version, Océ Publisher Express. And for advanced colour control and job preparation, ONYX Thrive™ workflow premium software is also available as an option.

Intuitive touch screen

A large intuitive touch screen is used to manage and simplify the production for every level of operator. On-line supplies overview, personalised smart inbox and print job queue management are all addressable from the user interface, allowing operators to easily keep track of printing needs.





Impressive input and output

The printer accommodates media between 297 mm and 1067 mm in width. Up to six rolls each containing up to 200 metres of media can be configured, loaded onto 3 inch cores. When it comes to output the printer is equally impressive, capable of a huge maximum print length of up to 30 metres.

High speed

The Océ ColorWave 900 has two productive print modes: 18 metres per minute at 1600 x 800 dpi and 9 metres per minute at 1600 x 1600 dpi.

Dual Tray High Capacity Stacker

This stacker has two large delivery trays which can be used to separate jobs or sets. It allows unloading and printing to take place simultaneously for maximum productivity.

Scalable print production

ONYX Thrive workflow offers print service providers a scalable print production solution based on Adobe® technologies. This product enables a true end-to-end PDF workflow from digital file submission through colour management, printing and cutting.

Aqueous dye ink

The Océ ColorWave 900 is a four colour system that uses 5 ink tanks including two blacks for higher optical density. The system comes standard with 2 litre ink tanks that can produce over 3,000 A0 posters. A 10 litre ink tank option is also available. Aqueous dye ink tanks are used which can be quickly and easily changed by operators.





Canon Inc.
canon.com

Canon Europe
canon-europe.com

UK English edition
© Canon Europa N.V., 2013

Canon (UK) Ltd

Woodhatch
Reigate
Surrey RH2 8BF
Telephone no 01737 220000
Facsimile 01737 220022
canon.co.uk

Canon Ireland

3006 Lake Drive
Citywest, Saggart
Co. Dublin, Ireland
Telephone No: 01 2052400
Facsimile No: 01 2052525
canon.ie