

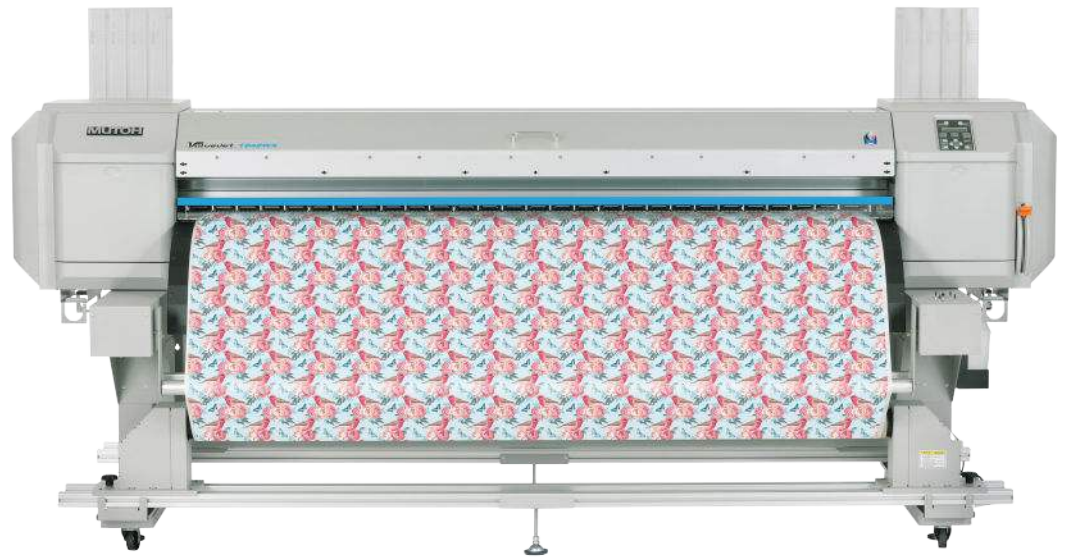
Made in
Japan

1910 mm
Width

Four Head
Setup

Head
Height up
to 4 mm

Up to
1440 dpi



Industrial High Quality Dye Sub Printer

The robust & industrial ValueJet 1948WX (1910 mm – 75.19”) dye sublimation printer will be a top choice for production oriented customers and businesses looking for a high quality volume printer for intensive use.

Ideal for established businesses looking for a high volume production printer, the compact & surprisingly user-friendly ValueJet 1948WX is suited for your high-end roll-to-roll sublimation needs. The printer will deliver a top speed up to 194 m²/h.

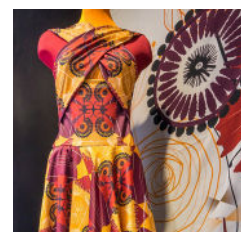
The VJ-1948WX model features 4 variable drop 8 channel print heads mounted in a staggered configuration, allowing a complete range of output resolutions between 360 x 360 dpi and 1440 x 1440 dpi.

Product Highlights

- Transfer sublimation printing up to 1910 mm (75.19”)
- Typical production speeds between 67 & 125 m²/h
- Staggered head setup with 4 latest generation 1440 nozzle print heads
- Incorporated heaters to remove moisture from the output
- Easy configurable pressure rollers with integrated disable function
- Minimum waste thanks to individual head cleaning possibility
- Environmentally friendly printing - high level of operator safety
- Mutoh water-based dye sublimation inks

Application Possibilities

Grow your business with high volume dye sub applications such as high quality sportswear, in-store & personalised home textile decoration and deco fabrics, fashion, soft signage, textile banners, sports equipment and solid object decoration (ceramic, metal, wood).





75" Dye Sublimation Printer

SPECIFICATIONS

Technical Key Specifications

Print Technology	Drop-on-demand Micro Piezo Inkjet Technology
Print Heads	4 (staggered setup)
Nozzle Configuration	180 nozzles x 8 lines / head
Drop Mass Range (pl)	3.3 to 45.3
Head Heights (mm)	Low: 1.5 / Middle: 2.5 / High: 4.0

Power Consumption

During Printing Heaters Off	< 600 W
During Printing - All Heaters On	< 2840 W
Power Supply	AC 100-120 V / AC 200-240 - 60/50 Hz

Media Specifications

Max. Media Width	1910 mm (75,19")
Max. Print Width	1900 mm (74,80")
Max. Media Thickness	0.3 mm / 1.3 mm / 2.8 mm *
*: Max. media thickness is specified per head height	
Media Measurements *	Ø 150 mm / 2" & 3" / 30 kg
*: Standard non-motorised roll-off system	

Recommended Working Environment

Temperature	22 °C - 30 °C with Δt: max. 2 °C/h
Humidity	40 % - 60 % (no condensation) with ΔRH: max. 5% RH/h

Machine Measurements

Width x Depth x Height	2983 x 996 x 1261 mm
Weight	201 kg

Ink Specifications

Ink Type	Water-based Transfer Sublimation Inks
Features	Suited for sublimation transfer paper of different weights as well as for direct printing onto closed polyester or mixed fibres with a high PES content
Ink Volume	1948WX is compatible with 1 liter bottles
Typical Ink Consumption	< 5 ml/m² on transfer paper

Performance

Super Fine (720 x 1080 dpi 12p uni*)	11.5 m²/h
Fine (720 x 1080 dpi 12p bi*)	23 m²/h
High Quality (360 x 1080 dpi 6p bi*)	47 m²/h
Quality Production (720 x 720 dpi 4p bi*)	67 m²/h
Production (360 x 1080 dpi 3p bi*)	88 m²/h
Speed Production (360 x 720 dpi 2p bi*)	125 m²/h
Max. Speed (360 x 360 dpi 1p bi*)	194 m²/h

* : uni : heads print as the carriage moves in one direction / bi : heads print as the carriage moves in both directions



Extended dual section heater to remove all moisture from the output before take-up/roll-up



Pressure rollers can be easily and individually disabled to cope with media cockling



Dual staggered head setup / head height up to 4 mm