

Scan / Enhance / File / Share

Compact, flexible, full color, E/A0 scanning

# Fully featured, convenience

## Large Format Scanner

**More than just great value**

SD One+ packs a huge amount of value into its lightweight 24" or 36" size. Easy to use, with fully featured software, plus a control panel directly on the scanner.

**Save time and money**

Must have office scanner at a very attractive price. Scan your oversized maps, engineering and construction drawings in-house with SD One+ to save space, time and money.

**Copy, share and collaborate**

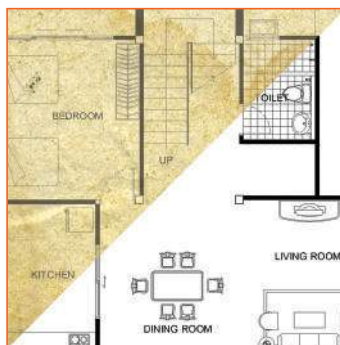
With unmatched ease of use and the highest possible accuracy, you can trust SD One+ on even the most complex projects.

**Capture all your document types**

Scan and document all your architectural, engineering and construction plans in standard file formats directly into your project folders.



Flexible control panel for easy handling



Improve your originals



	SD One+ 24	SD One+ 36
Maximum Scan Width	24 inch (610 mm)	36 inch (914 mm)
Maximum Media Width	26.6 inch (676 mm)	38 inch (965 mm)
Weight	18.7 lbs. (8.5 kg)	24.9 lbs. (11.3 kg)
Dimensions	32.2x9.1x4.9 inch (818x231x124 mm)	45.6x9.1x4.9 inch (1158x231x124 mm)
<b>Scan speed (color and monochrome)<sup>1)</sup></b>		
150 dpi	3.8 inch per second	
300 dpi	1.9 inch per second	
600 dpi	1.0 inch per second	
<b>Other specifications</b>		
Optical Resolution	600 dpi	
Maximum Resolution	9600 dpi	
Total number of Pixels	15552 pixels	
Contex CFR <sup>2)</sup>	Yes	
Maximum Media Thickness	0.03 inch / 0.75mm	
Accuracy	0.1% +/- 1 pixel	
Data Capture (color/mono)	48-bit	
Color Space	sRGB (24 bit) / Grayscale (8 bit) / Monochrome (1 bit)	
Connectivity	USB with xDTR	
Network workflow	Pull / Push	
ENERGY STAR <sup>®</sup> certified	Yes	
Software <sup>3)</sup>	AutoCAD <sup>®</sup> , Microstation <sup>™</sup> , ArcGIS <sup>™</sup> and all other CAD, GIS and other image editing / storage applications	
Operating System	64-bit Windows 8, Windows 7 and Vista	
Scanning Software	Nextimage FREE file scanning software included with the scanner. Easy creation of TIFF, JPG, PDF and PDF/A files and integration with Cloud destinations like Google Drive, Box.com, Dropbox, etc.	
Upgradable scanning software	Nextimage Scan+Archive. Full featured scanning software incl. multipage (PDF, PDF/A and TIFF) and full image quality controls	
Additional file formats <sup>4)</sup>	Nextimage Repro. Full featured scanning / copying software incl. built-in printer drivers and full color control	
Nextimage TWAIN	PDF, PDF/A and TIFF Multipage. DWF, CALS, BMP, JPEG-2000(JP2), JPEG2000 Extended(JPX), TIFF-G3, others	
Power Consumption (Ready / Power Save / Scanning)	64-bit TWAIN application driver included for use with EDM and other imaging software	
Power Requirements	5.5/0.5/14 W, ENERGY STAR <sup>®</sup> Certified	
	External power supply 100-240 VAC, 60/50 Hz, 16 W	
<b>Certification and Warranty</b>		
Safety	IEC 60950. Certificates: cUL (USA and Canada), CE (Europe), CCC (China), PSE (Japan), EAC (Russia, Kazakhstan, Belarus), KC (Korea), BSMI (Taiwan) and UKR (Ukraine)	
Electro Magnetic Compatibility (EMC)	Compliant with Class A requirements, including FCC rules (USA), ICES (Canada), EMC Directive (EU), CCC (China), VCCI (Japan), EAC (Russia, Kazakhstan, Belarus), KC (Korea), BSMI (Taiwan), UKR (Ukraine) and BIS (India)	
Enviromental	ENERGY STAR <sup>®</sup> Certified, EuP (EU), WEEE (EU), RoHS (EU) and REACH (EU)	
Country of Origin	Designed and engineered in Denmark, manufactured in China	
Warranty	2-year warranty and fast, easy parts replacement	
In the box	Scanner (24" or 36" model), 2 m USB cable, external power supply, basic scanning software (Nextimage FREE), installation software and user guides in PDF on USB flash drive, installation guide, calibration poster, calibration sheet and cleaning cloth	

- 1) Scanning speeds based on 24" wide document. Contex recommends Intel Core Duo, Core 2 Duo, or better processors, 2GB RAM, Hi-speed USB2. Speed tests performed using Nextimage software, PC with Intel Core i5-2500 Quad processor, 8GB RAM, Hi-speed USB2, 7200rpm HDD, Windows 7 64-bit Ultimate.
- 2) Color Fringe Removal (CFR) is a Contex Patent. Color Fringing is a natural consequence of CIS technology sequentially flashing R-G-B. Thanks to Contex innovative thinking, CFR will remove this problem with advanced filter technology.
- 3) Contex applications create industry standard raster file formats which can be used in any CAD or GIS application.
- 4) Requires optional Nextimage Scan+Archive or Repro software

All trademarks remain the property of their respective holders, and are used only to directly describe the product being provided. Their use in no way indicates any relationship between Contex and the holders of the said trademarks.

## Accessories:



**Optional**  
stand for easy movement and storage.



**Optional**  
Nextimage Scan+Archive  
More file formats and improved image controls.

Nextimage Repro  
Full featured scanning, copying and color controls.



Scan



Update



Save



Print



SD One nominated

DESIGNSUPPLY<sup>®</sup>  
supporting creativity  
0800 018 23 23  
sales@designsupply.com

Technology leadership  
**contex**  
WHEN IMAGING MATTERS